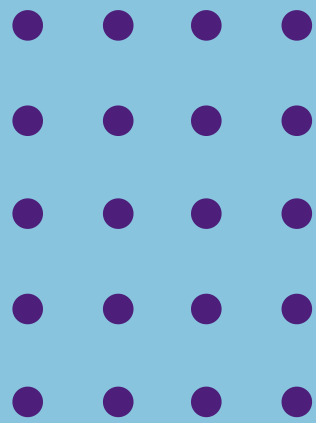




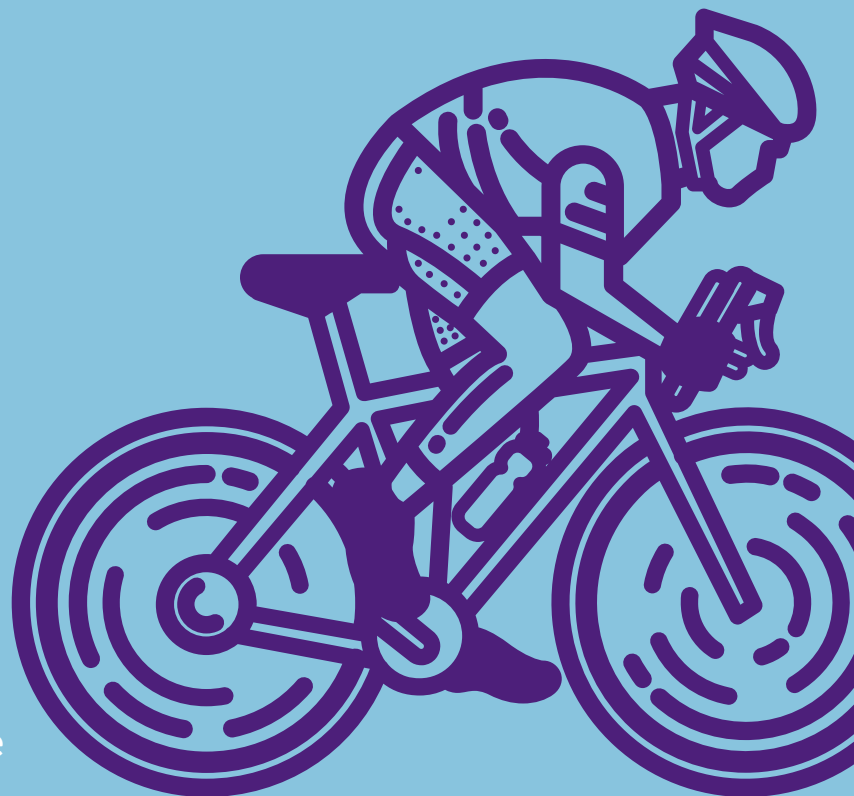
Learn Well
Technocraft



TALEND SYLLABUS

11th year of Accomplishments

**AUTHORIZED GLOBAL CERTIFICATION CENTER
FOR MICROSOFT, ORACLE, IBM, AWS AND
MANY MORE.**



08411002339/07709292162

info@dw-learnwell.com

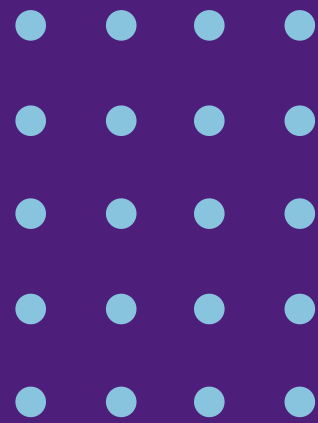
www.dw-learnwell.com

203, Supreme Center, ITI Road,

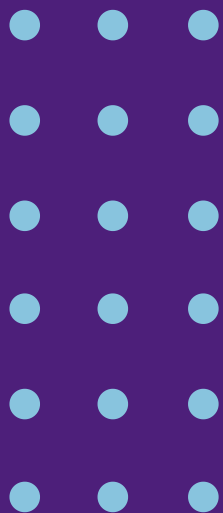
Above Pizza Hut,

Near Parihar Chowk, Aundh, Pune

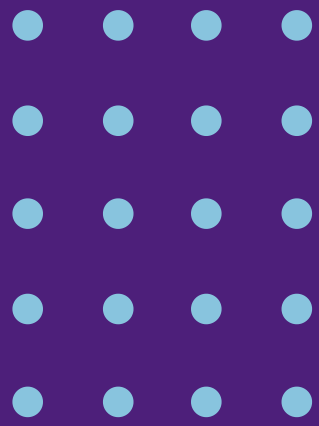
ACHIEVEMENTS FROM TRAINING



-
- CANDIDATE WILL BE ABLE TO SHOW 2-3 YEARS EXPERIENCE AFTER TRAINING.
 - REAL TIME SCENARIOS, CASE STUDIES, PROJECTS INCLUDED.
 - REAL TIME DATA PROVIDED FOR PRACTICE.
 - SOFTWARE WILL BE INSTALLED ON CANDIDATES MACHINE.
 - INDIVIDUAL 1 ON 1 DISCUSSIONS FOR RESUME MODIFICATIONS.
 - LEARN FROM INDUSTRY EXPERTS.
 - GLOBAL CERTIFICATION PREPARATION.
 - APPEAR FOR GLOBAL CERTIFICATION AT LEARN WELL TECHNOCRAFT ITSELF.
 - GET DISCOUNTED CERTIFICATION VOUCHERS.
 - AUTHORIZED GLOBAL CERTIFICATION CENTER FOR PEARSON, PSI, KRYTERION.

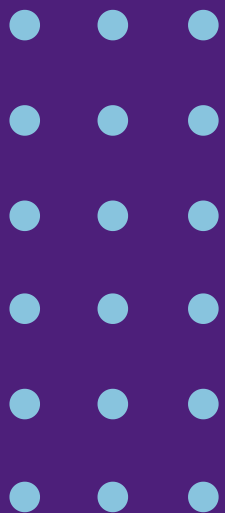


RECOMMENDED



Courses best Suited With Talend

- SQL
- Hadoop/Big Data
- Data Analytics - R programming/Python



Talend Syllabus

Getting started with Talend Open Studio

- Studio Definitions
- Starting the studio
- Configuring your own Talend View
- Creating the project
- Creating an example job

Designing a Business Models in Talend

- Opening/Creating a Business Model
- Modelling a Business Model
- Assigning Repository elements to a Business Model

Working with Metadata

- Creating a Built-in Schema
- Propagating Schema Changes
- Creating a generic schema from existing metadata
- Dropping Schema to empty components
- Cutting and pasting schema information

Using tMap

- Overview of tMap
- Connecting multiple inputs to tMap
- Creating joins in tMap
- Catching Rejects in tMap
- Using Expression Builder in tMap
- Using Variables in tMap
- Performance tuning of look ups in tMap

Basics of Java

- Classes and Objects
- Writing Hello Java Program
- OOPS Concepts
 - Method overloading
 - Static keyword
 - Abstract Modifiers
- Handling Java Strings

Using Java in Talend

- Creating Routines in Talend
- Using Custom Code in Talend
- Using tJava component
- Using tJavaRow component
- Using tJavaFlex component

Usage of Database Components in Talend

- tDBConnection
- tDBInput
- tDBOutput
- tDBRow
- tMySQLColumnList

Usage of Iterative Components in Talend

- tFileList
- tFlowtoIterate
- tIterateToFlow

Usage of Data Quality Components in Talend

- tUniqRow
- tReplaceList
- tSchemaComplianceCheck

Usage of Processing Components in Talend

- tJoin
- tFilterRow
- tAggregateRow
- tSortRow
- tReplace
- tAggregateSortedRow
- tNormalize
- tDeNormalize

Error/Exception Handling in Talend

- Using tJavaFlex

Configuring Statistics and Logs in Talend

- Capturing Statistics at Project Level
- Using tWarn, tDie, tFlowMeter
- Using tFlowMeterCatcher, tLogcatcher
- Using Global Variables in Talend

Preparing for Deployment

- Creating Context variables
- Creating Context group
- Usage of Prompts in Talend Jobs
- Running Jobs in different contexts
- Using tContextLoad
- Using tContextDump

Creating Subjobs

- Using tRunJob
- Passing parameters to Sub Job
- Passing context variables from Parent Job to Child Job
- Passing context variables from Child Job to Parent Job

Scheduling Jobs in TAC

- Creating a task in Job Conductor
- Creating execution plan in TAC

Performance Tuning in Talend

- Performance Tuning in tMap
- Performance Tuning using Subjobs
- Using ELT Components

Debugging Talend Jobs

- Adding Break points
- Debug Run in Talend Studio

Case Study

Note: There will be practical sessions for almost every topic mentioned above in the syllabus

Data warehousing Syllabus

Evolution of Datawarehousing - History

The need of Datawarehousing

Why Datawarehousing

What is Datawarehousing – The Definition

1. Subject -Oriented
2. Integrated
3. Non – Volatile
4. Time Varying

Datawarehousing Architecture

1. Data Source Layer
2. Data Extraction Layer
3. Staging Layer
4. ETL Layer
5. Data Storage Layer
6. Data Logic Layer
7. Data Presentation Layer
8. Metadata Layer
9. System Operation Layer

Dimension table

Fact table

1. Additive Facts
2. Semi Additive Facts
3. Non – Additive Fact
4. Cumulative
5. Snapshot

Attribute

Hierarchy

Types of Schema

1. Star Schema
2. Snow Flake Schema
3. Fact Constellation Schema

Slow Changing Dimension

1. SCD1 – Advantages/ Disadvantages
2. SCD2 – Advantages/ Disadvantages
3. SCD3 – Advantages/ Disadvantages

OLAP and OLTP

Difference between OLAP and OLTP

Types Of OLAP

1. Multi-Dimensional (MOLAP)
2. Relational(ROLAP)
3. Hybrid(HOLAP)

Also Available

- Internships - Paid / Free
- Internship certifications on successful completion
- Final year College Projects on Latest Skills
- Special Project batches
- College Seminars